



**TSA** | architects, p.l.l.c.



## Commercial/Interiors Project Experience

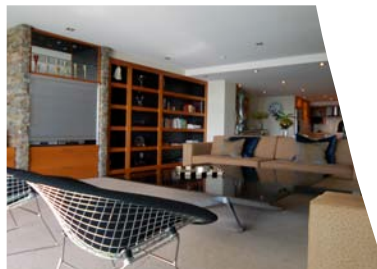
Both partners, Steve Thomas and Kent Smutny have extensive experience with different types of commercial projects prior to joining, and under the banner of TSA Architects pllc and now have expanded their capabilities into the area of Interior architecture by bringing on Thom McDonald.



Under the banner of TSA Architects pllc we have designed a commercial building in Everett Washington that contains 97,791 sf of commercial space divided among several retail tenants along with a second level of apartment units built over the retail space. In Roseburg Oregon we helped bring life back to an aging strip mall which dramatically increased the value of our client's real estate investment.



Thom McDonald has worked on a wide variety of projects where he has been responsible for creating the interior architecture and selecting all of the interior finishes. Mr. McDonald was educated in the States but has spent most of his career practicing in New Zealand.



Thom's experience varies widely from development of a new architectural image for KFC Restaurants to creating new offices for an international wool trading company in New Zealand out of an existing storage warehouse.